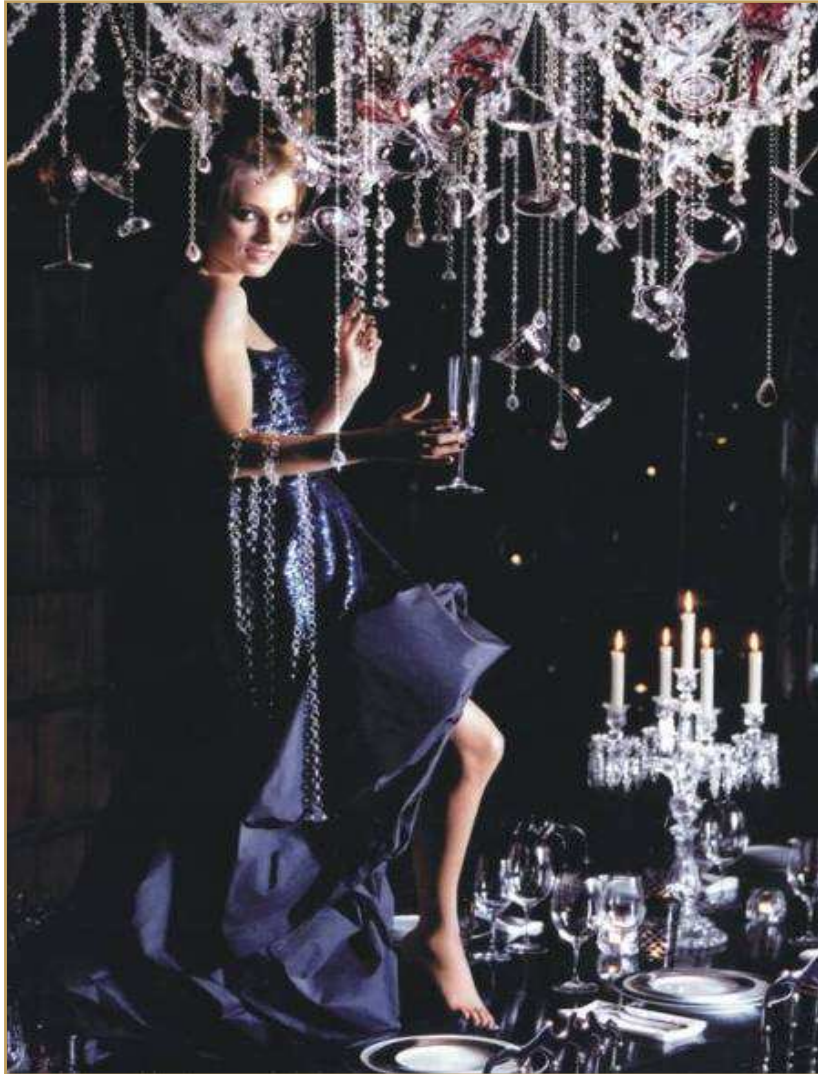


S O F I T E L

LUXURY HOTELS

BUENOS AIRES ARROYO

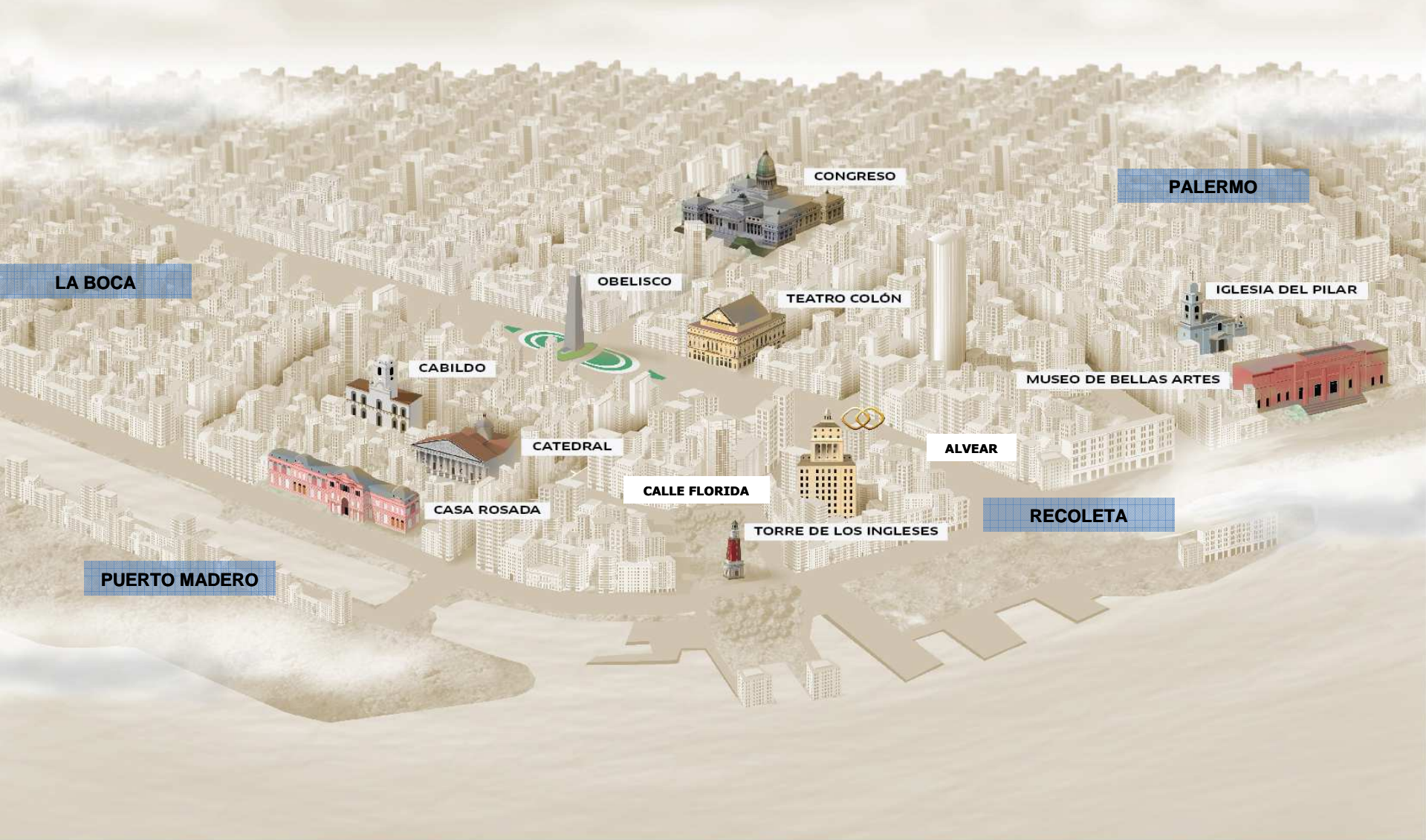


Welcome

SOFITEL
LUXURY HOTELS

Life is Magnifique

The Hotel



The Hotel



The Hotel



Originally built in 1929 by Nicolás Mihanovich, a shipping businessman from Yugoslavian origin, who intended to create the highest building of the city with an open view of the Rio de la Plata, from where he could see his ships sailing.

Featuring 20 floors and a height of 80 meters, the building achieved its owner's goal: to become the attraction of visitors who arrived in Buenos Aires, evoking a lighthouse overlooking the entire city.

For a long time, the tower operated as an apartment building, though it has not always been as outstanding as in the early days: it tasted darkness and oblivion for many years.

That was its state when the French Group Accor met the Bencich family to face the challenge of renovating this traditional porteño building.

This huge Project imbued with Argentine history and French design began in year 2000. Today it is a part of the historic heritage of the city.

The Lobby



Lift Lobby Area





. Dive
into
MyBed

Life is Magnifique



The hotel boasts 140 elegant rooms and suites which overlook the City, the hotel atrium or the Rio de la Plata.

Designer Pierre Yves Rochon stressed the classic French style of the building, adding modern, local and typical Art Deco elements.

He used modern lighting, elegant fabrics and textures with hues of gold, ocher, yellow and black and he entrusted the manufacture of the furniture to the most renowned local stores.

Therefore, he created unique and contemporary settings where guests can feel absolutely relaxed.

Amenities

Sofitel MyBed concept - Flat screen TV - Complimentary Wi-Fi – Bose audio systems - In-room safe – Cordless phones

Suites also feature:

coffee making facilities – exercise kit and wireless HP printers.

Rooms



Room Category	#	Beds	Size (m ²)	Size (ft ²)	Floor	View
Superior	55	1 Queen, 1 King or 2 twin	35	380	2 to 15	City view, Atrium view
Luxury	40	1 Queen, 1 King or 2 twin. May have sleeper sofa	38-40	430	2 to 15	City view, Atrium view
Junior Suite	16	1 King and may have sleeper sofa	45	485	6 to 14	City view, River view
Suite Prestige	10	1 King	48	538	3 to 7	City view, Atrium view
Penthouse	2	1 Queen	70	754	19	City view
L'Appartement	1	1 King, 1 Double	130	1400	17	City view, River view

Rooms



Rooms



Rooms



Suites



Suites





The Taste of Bon gôût

Life is Magnifique

Restaurant Le Sud



Café Arroyo



La Bibliothèque





The Art of Well Being

Life is Magnifique

Fitness Center



Fitness Center



Gym





Turn
your
Event
into
Magnifique
Events

Life is Magnifique

Inspired Meetings

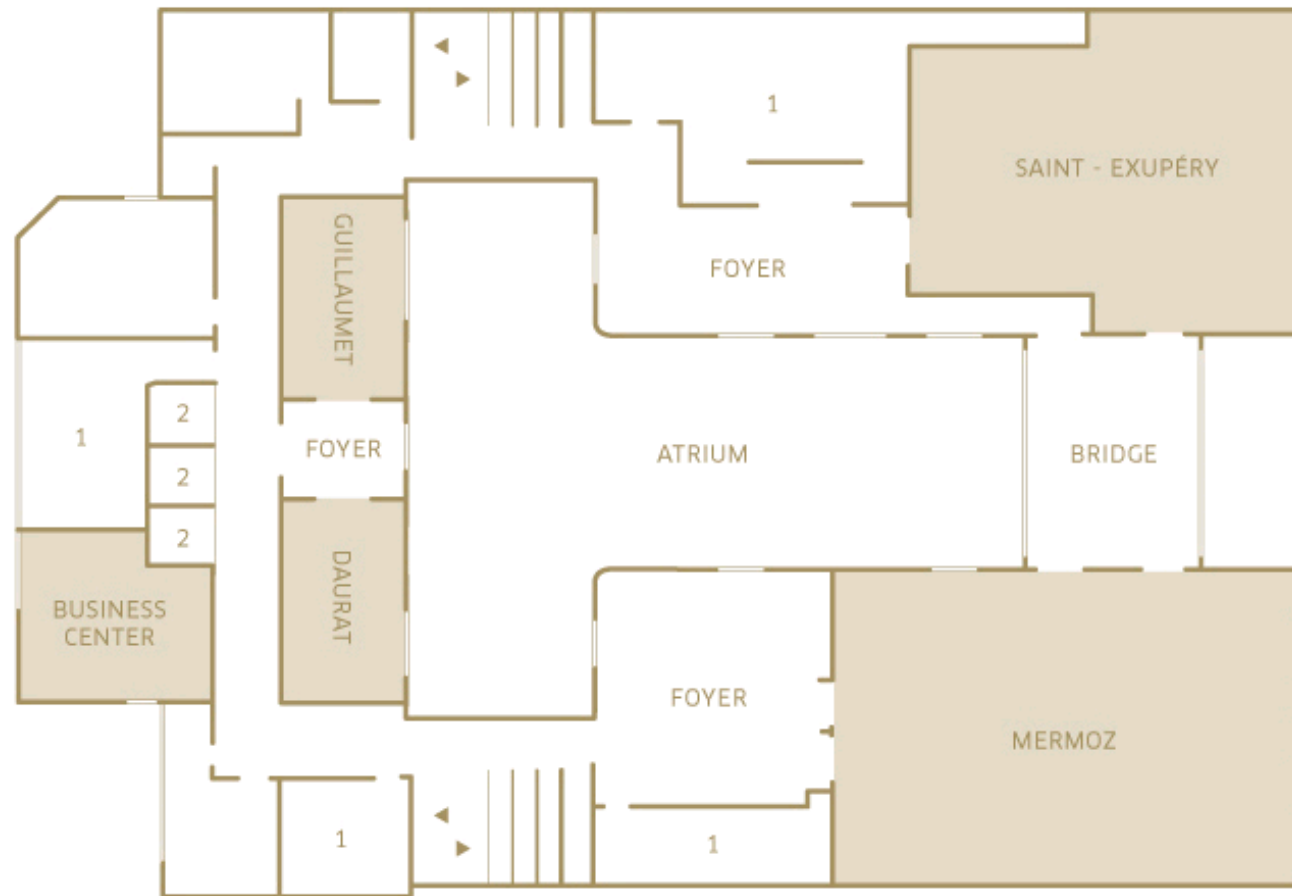


Inspired Meetings

MEETING ROOMS	AUDITORIO THEATER	ESCUELA MESAS	FORMA U U STYLE	COCKTAIL RECEPTION	BANQUETE BANQUET	BOARD IMPERIAL	AREA		ALTURA HEIGHT	
							M²	FT²	M	FT
NIVEL 1										
MERMOZ	140	70	45	150	120	40	155	1668	2.60	8.50
SAINT - EXUPÉRY	100	48	35	110	70	32	125	1345	2.60	8.50
DAURAT	16	9	-	-	12	12	23	247	2.60	8.50
GUILLAUMET	-	-	-	-	8	6	23	247	2.60	8.50

WI FI IN ALL ROOMS

Inspired Meetings



1. ÁREA RESTRINGIDA DEL HOTEL

2. ASCENSORES

AWARDS 2013



TRIP ADVISOR
Travellers' Choice Awards
Best 25 hotels in Argentina



CONDÉ NAST TRAVELER
Reader's choice for
2013 amongst the 25
best hotels in South
America



CUISINE & VINS Gourmet Magazine
Awarded La Biblioteque as the
Best intimate and glamorous spot
in Buenos Aires.



SOFITEL AWARDS - REGIÓN LAS AMÉRICAS

- Pasión por la Excelencia | RRHH | Eugenia Paoletta
- Simply The Best | Excelencia en Relaciones de Prensa y Redes Sociales | MKT | Magdalena Fitzgerald

CONDE NAST:
Gold list 2013: The
world's best
places to stay



GUIA OLEO
PREMIO DE ORO: MEJOR RESTAURANT 2012



CUISINE&VINS
MEJOR RESTAURANT
DE HOTEL 2012





CONDE NAST TRAVELER
READERS' CHOICE AWARDS
7º del Top 20 en Sudamérica



TRAVEL+LEISURE
The Best 500 of the World



TRIP ADVISOR
EXCELLENCE CERTIFICATE



GOURMAND WORLD COOKBOOK AWARDS
MEDAL OF BRONZE

Life is *Magnifique*